

QUANTA

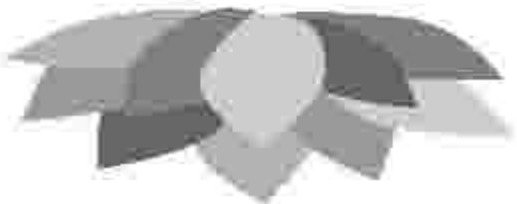
1984 to 2009

Visit the NEW Quanta Web Site

→ www.quanta.org.uk ←



QL2S
is



SILVER JUBILEE YEAR

**Volume 26. Issue 1
Feb/March 2009**

Information on the Association

Membership of QUANTA, the independent QL user group, is by annual subscription. The Membership Secretary can supply full details. Copies of the association's constitution & annual accounts are available from the Secretary. There is an extensive software library. There are active national subgroups. Details are given in the Member's Guide and in this magazine.

QUANTA Committee - 2008/2009

Chairman John Mason 73 Chewton Common Road, Highcliffe, Christchurch, BH23 5LZ

Email: chairman@quanta.org.uk

Tel: 01425 275894

Secretary Sarah Gilpin 181 Urmston Lane, Stretford, Manchester. M32 9EH

Email: secretary@quanta.org.uk

Tel: 0161 865 2872

Treasurer ,
Membership Secretary
& Missed Issues John Gilpin 181 Urmston Lane, Stretford, Manchester. M32 9EH

Email: treasurer@quanta.org.uk

Tel: 0161 865 2872

Email: membership@quanta.org.uk

Magazine Editor

Email: editor@quanta.org.uk

Helpline,
News Editor
& Librarian Dilwyn Jones 41 Bro Emrys, Tal-Y-Bont, Bangor, Gwynedd. LL57 3YT

Email: helpline@quanta.org.uk

Mobile: 07749-643922

Email: news@quanta.org.uk

Email: librarian@quanta.org.uk

Web Master Dan Abbott All contact with Web Master by email please.

Email: webmaster@quanta.org.uk

Back Issues Requests Basil Lee 31 Fairdale Gardens, London. SW15 6JW

Email: backissues@quanta.org.uk

Tel: 0208 789 1976

QUANTA reserves the right to publish, reject or edit any material submitted. The opinions expressed are solely those of the contributors. Member's private small ads - free (up to 50 words). Non-members private small ads (and members after 50 words) 50p per 10 words or part thereof. Terms strictly paid up-front with order. Receipt if requested. All copyrights and trademarks are hereby acknowledged.

Quanta Magazine

CONTENTS

COPY DATE for next issue.....	3
CHAIRMAN'S NOTES..... John Mason.....	4
EDITORIAL..... John Gilpin.....	4
QUANTA COMMITTEE PRECIS..... Sarah Gilpin.....	5
RWAP Advert.....	6
HELPLINE..... Dilwyn Jones.....	7
QL TODAY Advert.....	12
QUANTA NEWS..... Dilwyn Jones.....	13
LETTER TO THE EDITOR..... John Gilpin.....	22
QUANTA AGM 2009 NOTICE 3.....	24
CHAIRMAN'S REPORT..... John Mason.....	25
PROXY FORM.....	Centre Fold
TREASURER'S REPORT..... John Gilpin.....	33
ACCOUNTS..... John Gilpin.....	35
MINUTES OF AGM 2008..... Sarah Gilpin.....	37
JOCHEN MERZ Advert.....	40
MEMBERSHIP REPORT..... John Gilpin.....	41
WEB SITE REPORT..... Dan Abbott.....	41
QUANTA POSTER.....	42
LIBRARY CORNER..... Dilwyn Jones.....	43
CORRECTION..... Alex Wells.....	50
ARRAYS AS PARAMETERS..... Steve Poole.....	50
SUBGROUPS.....	54
QUANTA SILVER JUBILEE & "QL is 25" EVENT DETAILS..... Sarah Gilpin.....	57

COPY DATE for APRIL/MAY 2009

ISSUE is:

5TH APRIL 2009

Please ensure that your copy reaches the editor on or before that date. Copy on Paper or Magnetic Media or by Email.

All Contributions are Welcome.

Copy on Microdrive or Floppy Disk or CD to be accompanied by hard copy printout.

Copy by Email to - editor@quanta.org.uk

This Magazine and all the articles etc. within it are copyright © QUANTA 2008 unless otherwise stated. Reproduction and redistribution in any form is not allowed without the express written permission of the publisher. All copyrights and trademarks are hereby acknowledged.

QUANTA's SILVER JUBILEE has arrived.

Who in 1984 would have believed that might be possible?

Let us celebrate this unique event. It won't come again.

I hope to see as many of you as possible at the "Quanta Silver Jubilee" and "QL is 25" Workshop and Annual General Meeting at the Allesley Hotel, Allesley, Coventry over the weekend Saturday 18th / Sunday 19th April 2009.

Thank you Duncan Neithercut for your very positive article on the future of the QL and Quanta (Magazine Vol.25, Iss. 6).

In accordance with the Constitution my tenure as your Chairman comes to an end and I stand down at the closure of the AGM 2009.

EDITORIAL

John Gilpin

Despite the last two issues being very late in reaching our readers, I was extremely pleased to receive your comments on the high quality of the publications produced. Thank you for what I see as your vote of confidence in what I am doing. I hope that our problems resulting in the lateness of those issues is now behind us and that this issue will reach you in line with the QUANTA Constitution to enable you to take part in our AGM by proxy if you are unable to join us at The Allesley Hotel in April 2009. Your Proxy form can be found in the Centrefold of this Magazine

You are all aware that this is a very special year for QUANTA and the QL (Silver Jubilee), and I intend to reflect that in the quality and content of the magazine. Work is well advanced on a Special Silver Jubilee Issue to be published in March 2009 enabling us to look back over the last 25 years as well as forward in order to determine what our targets will be over the next few years. Anyone with any copy for the Silver Jubilee Issue should send it to me as soon as possible if I am going to be able to include your submissions in that issue.

Plans for our Celebratory Workshop in April continue to become a reality and the event looks like being another success for QUANTA. It can only be a complete success if it attracts as many QLers as possible to take part and I ask you to read our proposals for the event which are printed in this issue and make every effort to attend. The central location of the venue has been carefully chosen to minimise the travelling distances for most of our members and access from airports, rail stations, motorways and bus terminals to the venue are said to provide easy transfers for visitors from all parts of the world. Anyone who has an interest in the QL and/or its operating systems will be made most welcome at the Allesley Hotel in April. We hope that our program for the two day event - including the 25th Annual General Meeting of QUANTA - will have something of interest for

Quanta Magazine

everyone. There are also adequate facilities for retail therapy for those friends, partners and spouses who have a lesser interest in our computing hobby and other places of interest to visit in the near locality. Special rates for accommodation have been negotiated with the Hotel in order to provide a "one stop" venue for this event and the Hotel have requested that we ask you to make your bookings through Sarah Gilpin - QUANTA Secretary - who can also answer any questions that you may have. This is YOUR Silver Jubilee Celebration. Enjoy it - IT WON'T COME AGAIN. We look forward to seeing as many of you as possible in Coventry.

QUANTA COMMITTEE PRECIS

Sarah Gilpin

The pre-AGM committee meeting was held at Cherwell Valley service station on 1st February 2009. The emphasis of the meeting was on the QL and QUANTA's Silver Jubilee. When we all bought our first QL did we expect to still be using it in 2009 – 25 years later? This is a GREAT ACHIEVEMENT – let us congratulate the QL fraternity for their tenacity and loyalty to the QL.

Committee received and approved John Mason's Chairman's report and John Gilpin's Treasurer's report, accounts and membership report. These reports are published in this issue of the magazine.

The Secretary had received 5 nominations by the closure date. These nominations are published on the proxy voting forms as a pull out section of this magazine. Please send in your vote, if you are unable to attend the AGM. Committee also discussed and approved the Ordinary Resolution, regarding the postal supplement to overseas members, which will be presented at the Annual General meeting.

The venue of the 25th – Silver Jubilee - Annual General Meeting will be at The Allesley Hotel, Coventry at 2.00 pm on Sunday 19th April 2009. The workshop will be open at 10.00 am on Saturday 18th April 2009, for further details see the notice in the centre of this magazine. The workshop programme was finalised. Committee have negotiated a favourable room rate with the hotel and we look forward to holding a busy and vibrant weekend. Please book your accommodation with QUANTA Secretary, Sarah Gilpin, and not with the hotel direct. (This is at the request of the Hotel).

John Gilpin confirmed that the updated Members Guide had been sent to all QUANTA members with issue 4 of the magazine. Committee thanked John for all his hard work as editor in getting out 3 issues of the magazine in as many months and apologised to the membership for the erratic timing of magazine Volume 25.

On behalf of the current Committee I should like to thank John Mason, retiring Chairman, for all his hard work, over many years, on behalf of QUANTA. He has been an excellent Chairman, guiding his small but hard working fellow Committee members through the difficult period of declining membership, whilst looking for ways forward for the QL fraternity.

Quanta Magazine

RWAP SOFTWARE

3, Dale View Court, Fulford, Stoke-on-Trent, Staffordshire. ST11 9BA

Tel: +44(0)1782 398143

www.rwapsoftware.co.uk

www.rwapadventures.com

RWAP Software provide a wide range of software and hardware for the Sinclair QL, Cambridge Z88 and ZX Spectrum computers and continue to support and promote the Sinclair community well into the future.

As well as a wide range of software products (adventures, games, utilities, business software and a route finder), we also supply the SBASIC/SuperBASIC Reference Manual and a wide range of second hand hardware, software and books (from books on Quill through to Super Gold Cards).

We have now reached an agreement with TF Services to offer their wide range of spares to keep you going.

Examples of some of our stock:

Return to Eden (Text & Graphics Adventure) £10

Q-Word (Full colour word based game) £20

QL Genealogist (Genealogy Program) £20

SBASIC / SuperBASIC Reference Manual on CD ROM £20

We have a wide range of other software, both new and second hand, and can help you migrate to floppy disks also.

New Sinclair QL Keyboard Membranes £20

Replacement Sinclair QL Case Tops £8

Replacement QL Chips from £4

New Sinclair QL PSU £9

Transform Microdrive Storage Box £2

Disk Interfaces from £15

10 x 3.5" DSDD Disks £10

A whole host of other spare parts and services to keep your QL in top condition

Plus Lots of similar items for the Cambridge Z88 and ZX Spectrum !!

- Visit our web sites or get in touch to let us know what you need and we will see if we can help!

Members wishing to submit Helpline requests via email can use the email address Helpline@quanta.org.uk or if you prefer to use traditional post, please send the Helpline request to me via the address printed inside the front cover of the newsletter.

Obviously, we cannot guarantee to answer every query we receive, but we will do our best! Where we have been unable to answer the queries, we may print the help request as an open request in the newsletter to ask if any of the readers can come up with a solution. And, of course, if readers feel that they have a better solution than we came up with, or would like to correct any errors we make, please write to us!

Q. Can I use an Iomega Zip drive with my QL?

A. There are three different connection standards to consider:

1. Parallel port Zip drive. This cannot be used on a QL system (e.g. Super Gold Card parallel port). It can be used with an emulator running on a PC. QPC2 and QXL should be able to see this as one of the PC's drive letters and handle it via the QXL.WIN filing system in the usual way, bearing in mind that you are dealing with removable media.
2. USB drive. Same details as above.
3. Atapi IDE connection. The 100MB and 250MB units should be usable via a Qubide hard disk interface version 2 or later (older versions will need to be upgraded to version 2). The removable media are formatted just like Qubide IDE hard disks.

I have no experience of the 750MB cartridge versions of the Zip drive. Does anyone know if these can be used?

Q. I have an old basic program which needs to redefine the QL character set. Unfortunately, although it works on an original unexpanded QL, the font is either ignored or the program crashes when it runs.

Quanta Magazine

A. The program is probably using an illegal "poke" to set up the new font. This type of poke command makes assumptions about the layout of memory, so only works on one particular QL system. Such programs usually redefine the fonts with a command like:

```
POKE_L 167722,new_font_address
```

Another method often seen in older programs is:

```
POKE_L 42+(PEEK_L(PEEK_L(163960)+4)),new_font_address
```

Since the system variables and channel definition tables can move around in memory, these approaches are doomed to failure on most QL systems, for example if pointer environment or the second screen are in use. The correction required is to work out exactly what the POKE_L is trying to achieve and see if we can use a CHAR_USE command (CHAR_USE is a Toolkit 2 extension) to set the new font address for a given channel:

```
CHAR_USE #channel_number,new_font_address,0
```

CHAR_USE can redefine both the standard and extended character sets. If the program used the address 167726 in the POKE_L command (or 46 instead of the 42 in the second example) it was probably trying to redefine the second (extended) character set:

```
CHAR_USE #channel,0,new_font_address
```

If you use CHAR_USE, your programs should work across all QL systems and emulators.

Q. I can get Sernet to work between two computers, and only on SMSQ/E systems. Why can't I get it to work if one of the systems has QDOS, and why can't it work with more than 2 connected computers?

A. QDOS serial port drivers don't have all of the facilities of the extended serial port drivers of SMSQ/E, e.g. QDOS doesn't support split input and output channels. To some extent you can work around this by adding Hans-Peter Recktenwald's new serial port drivers for the QL, which can be downloaded from my web site at:

www.dilwyn.uk6.net/utills/index.html

Quanta Magazine

or from Hans-Peter's web site:

<http://members.tripod.com/phpr/index-ql.html>

Look for the SER Handler package called SimSer.

The issue with more than 2 connected computers is rather more complex. Some versions of Sernet only cater for a 2-computer network, although the author Bernd Reinhardt can supply on request a version to work on more than 2 connected computers. 3 or more networked computers also need special cabling, so-called 'circular' serial cables - more details in the Sernet manual.

Q. I'd like to add a new keyboard to my QL, as the membrane is broken and I'm having difficulty obtaining a new keyboard membrane.

A. Rich Mellor at RWAP can still supply new keyboard membranes. If you want to add a PC-style keyboard to your QL you will need a keyboard interface, which is placed inside the QL. Although none are currently manufactured, it is usually fairly straightforward to obtain a second hand one from some of the QL traders - try contacting RWAP Services. *[See the advertisement on page 6 of this issue - Ed]*. Examples of good interfaces to consider are the DiRen keyboard interface, and the Superhermes Lite.

Q. I'm writing a program which handles accounts and I need a routine to print numbers as currency values to 2 decimal places, such as £1.00

A. Try using the PRINT_USING command from Toolkit 2, which is specially designed to format numbers in this way, e.g.:

```
PRINT_USING #channel,"####.##",amount
```

The above example prints the number as 4 digits before the decimal point and two decimal places. If you change the `####.##` to `####,##` the separator becomes a comma instead of a decimal point. Some currencies use commas rather than points in prices and currency values. Adding \$ symbol before the first # uses 'symbol' as a currency value before the number, e.g. `$£####.##` uses a British pound symbol. On SMSQ/E systems, you can use CTRL SHIFT u to generate an Euro currency symbol

Quanta Magazine

€. Further details of PRINT_USING can be found in section 13.1 of the Toolkit 2 manual. If you want to go one step further and convert the currency value to a string which can be handled by your program, try using the FDEC\$ function:

```
money$=FDEC$(amount, field_width, number_of_decimal_
places)
```

For example, FDEC\$(100,7,2) would return the value 100 as a 7 character string with 2 decimal places and any empty spaces out of the 7 character field width filled with spaces, so money\$ would be " 100.00" in this example. Always make sure you allow a suitable field width to ensure the value fits!

Q. I need a routine to round numbers to the nearest whole number. I've tried using INT, but it always rounds down to the nearest whole number, for example INT(1.75) is 1, whereas I need it to return 2.

A. Try adding 0.5 to the value when applying INT. This should make it round to the nearest whole number, e.g.

```
INPUT num:PRINT INT(num+0.5)
```

Q. I'm trying to write a program using Jochen Merz's menu extension software. Although my program draws the menus, I can't control the menu - clicking on items in the menu is ignored and the only way out is to press break to get back to basic.

A. You should use the OUTLN command to set an outline within which the menu is drawn for the basic program. OUTLN should be applied to the primary channel (usually #0) in whatever size you need for your program, a 512x256 area will cover the whole screen on an original QL, for example:

```
OUTLN #0,512,256,0,0 : LET f$=FILE_SELECT$
```

Q. I've bought a second hand disk interface, but it came without a manual. Where can I get a replacement?

A. Replacement manuals for some disk interfaces and a generic manual are available to download from my web site, at:

Quanta Magazine

www.dilwyn.uk6.net/docs/manuals/index.html

Q. Since I upgraded to SMSQ/E I can't get Alt-Enter to recall the last line I entered.

A. Alt-Enter is part of the hotkeys job in SMSQ/E, so you have to make sure that the hotkeys job is running by using a HOT_GO command after you have loaded all your extensions.

Q. I am trying to run a basic program which loads and uses some basic extensions, but when the program tries to call the extensions it stops with an error message. What is going wrong?

A. On some early Sinclair ROM versions (e.g. AH and JM), you can't install and use an extension in the same program, so you should write a short boot program to load and install the extension instead, then the boot program can LRUN the original program. This workaround helps make the program work on all ROM versions.

Q. Can I sell surplus QL equipment through Quanta?

A. Private small adverts in the newsletter are free to Quanta members. Contact the newsletter editor with your sales/wants small advert.

[See the note at the bottom of the inside front cover. QUANTA also has a small repository of second user QL items donated to us for sale to members. Such sales are handled through Rich Mellor of RWAP Services to whom all enquiries should be made. - Ed]

[The April/May issue of QUANTA Magazine will contain answers to any questions raised at the "Helpline Surgery" to be held at the "QL is 25" celebratory weekend at The Allesley Hotel near Coventry on April 18th/19th 2009. The Surgery is planned to be held on Sunday Morning (April 19th). If you have any questions which you would like answered, whether you attend the workshop or not, please send them in good time to enable our "experts" to research their answers. Questions should be sent to:-

QUANTA Secretary, Sarah Gilpin.

Secretary@quanta.org.uk

Quanta Magazine

QL Today QL Today QL Today QL Today QL Today

QL Today is now in its thirteenth successful year. It has established a reputation as the definite source of up-to-date news and information on QDOS/SMSQ systems. We have had many free cover disks and CDs featuring loads of software and articles on everything from the latest hardware projects to show reports. Every issue contains an average of 55 to 60 pages DIN A4 - jam-packed with information, articles, reviews and more! We are working on Issue 3 of the current volume - it will be ready by the middle of March, as scheduled. Looking at the material we have now, 6 weeks before the release date, we can say that it will be another very interesting issue.

You can join QL Today at any time, even in the middle of a volume. You will get the issues already published from this volume, and, of course, all forthcoming issues of this volume as scheduled.

QL Today subscriptions are available directly through J-M-S (SMSQ-J-M-S.com) or -brandnew! - through Quo Vadis Design - Bruce Nicholls (www.QL-QVD.com)

Alternatively, fill in the subscription form below and send or fax it to J-M-S.

QL Today QL Today QL Today QL Today QL Today

I hereby subscribe to **QL Today** for 4 issues of Volume 13

The total price for all four issues is as follows, including postage and packing (please tick):

England EUR 28.90

Deutschland and Netherlands EUR 30.90

Rest of Europe EUR 33.90

Rest of World airmail EUR 44.90

Please charge my credit card: VISA MasterCard Diners Club

_____|_____|_____|_____|_____|_____|_____|_____| Expires _____|_____|_____|

Card Verification Code _____|_____|_____

Same price as last year!!

Money transfer to one of the following accounts:

Deutschland: Jochen Merz, Account 493 50 431, Postbank Essen, BLZ 260 100 43

Österreich: Jochen Merz, Account 85055317, PSK Wien, BLZ 60000

Switzerland: Jochen Merz, Account 60-690080-4, PostFinance, Clearing-Nr. 09000

The Netherlands: Jochen Merz, Girorekening 1258439, Postbank NL Amsterdam

and from all other countries in EUR with IBAN and BIC to account

Jochen Merz, Deutsche Postbank AG, IBAN: DE21 3601 0943 0611 1004 37 / BIC: PBNKDE33 360

UK customers can pay £26.50 (price based on exchg. rate beg. of Feb, valid until end of March 2009) to

Jochen Merz, Account: 83795395, Citibank UK, Sort code 30-00-45

or send cheques in £ - no fee for UK sterling cheques (payable to Jochen Merz only)

Payment via Paypal: Log into your paypal account and send the money to paypal@J-M-S.com

Name: _____

Street: _____

Town: _____

City: _____

Country: _____

E-Mail: _____

Date, Signature: _____

Please fill in and send to Jochen Merz Software, Kaiser-Wilh-Str. 302, 47169 Duisburg, Germany,
or Fax to +49 203 501517 or Email to SMSQ@J-M-S.com

QL at Centre for Computing History

The QL, ZX80, ZX81, Spectrum and ICL OPD computers are among the exhibits on display at a museum dedicated to computing history on the borders of Cambridgeshire, Essex and Suffolk.

Jason Kilpatrick had amassed a large collection of computers and realised this sort of project hadn't been done before, so with Elaine Collins he set up a committee of prominent people from Haverhill's business community, and together they launched the Centre for Computing History in February 2008.



Jason Kilpatrick, curator of the Museum Of Computing History, with the OPD system in the background

They welcome donations of computer equipment, peripherals and documentation both for the museum collection and as equipment they can hire out to TV & film companies, which is an important revenue stream for the museum.

The computer museum facility is currently only viewable by appointment until more appropriate public premises are secured and developed. However, you need only an email or call to let them know when you would like to visit. They are open 9 am to 5 pm Mon to Fri. and other times can be easily arranged with prior agreement.

The Centre for Computing History is mostly privately funded by corporate sponsorship. If you would like to donate funds to this project to preserve computing history, there is a DONATE button on their web site where you can transfer money from your PayPal account.

For anyone who'd like to visit this museum, here are the contact details:

Web site: <http://www.computinghistory.org.uk/>
Email enquiries: admin@computinghistory.org.uk

Quanta Magazine

Telephone: 0870 8958606

Address for enquiries: Centre for Computing History, The Counting House,
High Street, Haverhill, Suffolk CB9 8NT

Technical Queries & Vintage Computer Hire

Contact: Jason Fitzpatrick - jason@computinghistory.org.uk

News From Urs König

As we all know by now, this year we celebrate 25 years of the QL. Urs König of Cowo Electronic in Switzerland (you probably remember the QTOP software and ExeQtor QL-compatible computer) has created some web pages and files to help celebrate the event.

First of all, have a look at his web site's 25th anniversary page:

http://www.glvsjaguar.homepage.bluewin.ch/SinclairQL_25th_anniversary_1984_to_2009.html

Also, have a look at these sites and blogs, including references to famous ex-QLers like Linus Torvalds (Linux) and Andy Pennell (who taught many of us how to program in 68k assembler thanks to his QL books):

http://groups.google.com/group/comp.os.misc/browse_thread/thread/ebc0ad379434cb7c?q=linus+torvalds+ql

<http://blogs.msdn.com/andypennell/archive/2009/01/12/the-sinclair-ql-is-25-yrs-old-today.aspx>

<http://labs.pcw.co.uk/2009/01/sinclair-qls-25.html>

<http://torvalds-family.blogspot.com/2009/01/odd-hardware.html>

<http://opendotdotdot.blogspot.com/2009/01/linus-gets-misty-eyed-over-sinclair-ql.html>

Urs has also put together a 25th anniversary PowerPoint presentation which you can view on a Windows PC:

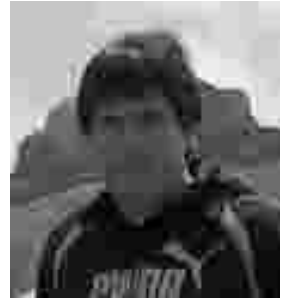
<http://www.cowo.ch/downloads/SinclairQLis25-compressed.ppt>

Quanta Magazine

And, a little bit mischievously, he added this:-

“No not Sinclair this time, Asus did it. They copied all the good old concepts and went for it. OK, the thing has another name ‘Eee Keyboard’, not ‘Quantum Leap’...

<http://www.engadget.com/2009/01/06/asus-eee-keyboard-revealed/>



<http://www.heise.de/newsticker/Tastatur-mit-eingebautem-Media-Center-PC--/meldung/121244>

Do you see the similarity to the QL and its launch? A real deja-vu or what?”

Lear PCB Cad

Malcolm Lear has issued a revision (version 6.62) to PCB Cad to correct an error in the previous release.

This removes negative gerber image problems introduced in version 6.61. Gerber-X export now embeds only the apertures required on a file by file basis. High density track mode now plotted with correct width.

Another small update to the PCB Cad design program (version 6.63) was issued in early February. Malcolm says that there are “not many changes, mostly minor bug fixes. The program now does everything required for quick develop and export of all required design files.”

Here’s a list of the updates in version 6.63:

- Extended filename maximum length from 8 to 10 characters. DOS compatibility deemed unimportant.
- Board physical construction information now included in the readme.txt file on automatic gerber export.
- Fixed program crash when picking up component after failed library search.
- Label layers changed as well as elements when loading old files.

Quanta Magazine

At the time of writing, we had provisionally heard that Simon Goodwin hopes to give a talk about this program at the QL Is 25 event, on Saturday afternoon. Simon has a lot of experience in this field and his presentations at workshops are always interesting and well worth attending.

News From Malcolm Cadman

Malcolm reports that pages by Rick Dickinson (who designed casings etc for Sinclair Computers) about the QL are now at:

<http://www.flickr.com/photos/9574086@N02/sets/72157600854938578/>

where you can see early case designs for QL and peripherals, including many which didn't see the light of day.

Rick's main web site remains at:

<http://www.theproductdesigners.com/>



Rick Dickinson's "QL and beyond" page on Flickr.

Quanta Magazine

Norman's Blog

Ever wondered what QL Today authors do when they're not writing articles? No, neither have I, although I wonder if we might not be better off knowing sometimes?

Well, in between writing assembler articles and code, Norman Dunbar finds time to write a blog (a Web Log, or a kind of online diary). He writes:

"Maybe, you could mention my new blog:

<http://qdosmsg.dunbar-it.co.uk/blog>

There isn't any QDOSMSQ there yet, but there's possibly enough to antagonise a few people!"



Norman Dunbar's Blog

Quanta Magazine

QPC2 runs on Windows 7 Beta

Ken Bain reported on the ql-users mailing list on 29th January that he has successfully had QPC2 running on Windows 7 Beta, which at the time of writing was available to download (for a limited time, registration required) as a trial version from the Microsoft web site, along with the usual health warnings about what you get yourself into with Beta-test software:

<http://www.microsoft.com/windows/windows-7/>

Ken wrote:

“QPCII runs in Windows 7 beta. Well, mine does, Lonely Joker and Mview seem to be working OK.”

GWASS News

George Gwilt writes:

“There is a new version of GWASS available.

This allows assembly of programs with COMMON sections in devices other than RAM. In particular you can use WIN, FLP and DOS. Previously you could only use RAM.

The new version is on my site at

<http://web.ukonline.co.uk/george.gwilt/>



The GWASS Assembler from George Gwilt

Quanta Magazine

QL Documentation CD

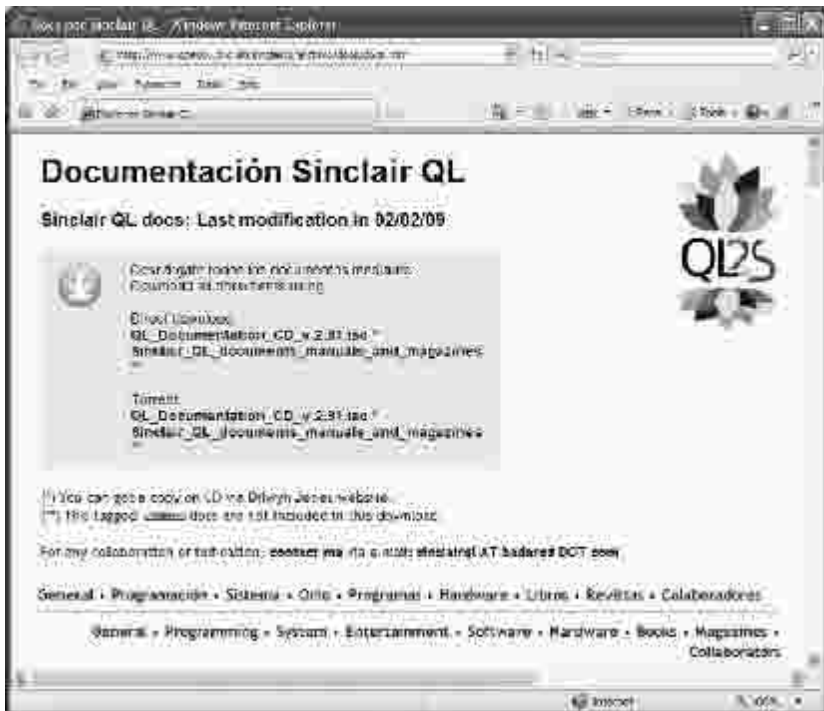
Javier Guerra has kindly uploaded a CD image (.iso) of the "QL Documentation CD" to his Documents and manuals site. I have always wanted to make this invaluable collection of documents and QL information available to as wide an audience as possible, but didn't have enough space on my web site to make it all available in its entirety:

<http://www.speccy.org/sinclairql/archivo/docs/docs.htm>

Now you can download the contents of the CD in three different ways:

- A .zip file with only the contents of the zip folder.
- An .iso image of the CD via torrent.
- An .iso image of the CD via direct download.

Also the rest of the documentation is now available via direct download



QL Documentation CD available online

Quanta Magazine

JUST WORDS! Web Site

Geoff Wicks writes:

The Just Words! Web site is due to close on 15th February 2009. The host company, Lycos, is closing all unprofitable activities. Although Lycos originally promised to stay open until at least 31st March the closure has now been brought forward.

Just Words! is actively looking for an alternative host, but the web site is likely to remain closed for some weeks.

SETW Update

George Gwilt

Norman Dunbar's recent article in QL Today on PE with Assembler taught me that there are two things you can do with PE windows of which I was previously unaware.

First you can arrange for each main window and for each sub window that it will not be cleared when it is first drawn or redrawn.

Second you can arrange that for each main window and for each application window you can stop the arrow keys from moving the pointer.

A new version of SETW, which produces PE windows for S*BASIC (TurboPTR), C (CPTR) and Assembler, is now available at

<http://web.ukonline.co.uk/george.gwilt/>

This version allows the user to set the windows for clear/don't clear and keys move/don't move the pointer.

Quanta Magazine



Opening screen of SETW



Another screen from SETW

News from Rich Mellor

After practically 25 years as a QL trader, Tony Firshman (TF Services) has reluctantly passed on his stock of original QL hardware and parts to Rich Mellor (RWAP). Trade in the original hardware and add-ons has dried to a trickle in the last few years, and he simply does not have the time to adequately deal with all the aspects of keeping and maintaining stock. He is sure he will still be doing work in the background, but will not be making any more of his products, other than in exceptional circumstances.

He remembers the days when he needed a daily trip to the post office and when it was his main business activity. Internet programming and property renovation have now taken over.



Relating to Duncan's 'The future of Quanta' article, there are a few comments I would like to make :

THE END OF PAPER?

Every week I buy a French computer magazine which closely follows the state of the art, with its own laboratory to test all new devices as they come onto the market.

One recent article dealt with storing files. In France it is often assumed that you should change computers every two to three years. This is because of the concept of 'RAM', a technique whereby data is stored by scatter-loading. That is, instead of storing data sequentially on media, it is stored randomly at the first free address it encounters on spinning media. When the current free space is used up, an EOF 'end of file' marker is written, followed by a pointer to the next free space found as the media head travels. On microdrives or floppy disks, the result is that saving and reading files is quicker. But this results in fragmentation of files, which are scattered throughout the media. On hard disks which spin at much greater speeds, fragmentation leads to ever-longer delays as the disk gradually fills with file unctiguous file sectors.

Sinclair allowed QLs to use very small sectors, but IBM found after much research that page-size sectors gave maximum efficiency. But pagination causes huge chunks of media to be empty, so hard disks rapidly become full, meaning you must use defragmentation software at least twice a month, failing which you either get an 'Out of virtual memory' message, or your PC runs DEAD slow. The modern Defrag routines are not optimal, as they do not really change the data to make it fully sequential, that is contiguous. So your PC hard disk runs out of storage space much faster than it really needs to. A similar thing happens on QLs. When a floppy disk is full, load each file in turn into memory, and then save it to a formatted virgin disk. If you then run your programs from the new floppy, they will load much faster. But PCs can't do this as efficiently, as they store all manner of temporary associated files higgledy-piggledy across media. The code to sort out the files into

Quanta Magazine

sequential order is just too complicated to be reliable. So your gigabytes are wasted and your PC condemned to run ever-slower.

The end result is that after a few years your hard-disk will get a couple of bad sectors, so linked files will be bad, the PC will get confused, and your hard disk files will be inaccessible. Don't try copying them to a new hard disk, as this will make an exact copy with the same dog's breakfast of fragmented data. Floppy disks on PCs have the same problem, so be prepared to lose all your data....Oh!, you say, I made back-ups of everything onto CDs. Read on...

My French magazine's laboratory tested all its CD's more than five years old, and 20% of them failed to read. They were all good brands, so avoid cheapo-cheapos like the plague. Now what this means is that after about ten years all your data will be inaccessible, especially as media regularly become obsolete, which means you have to keep all your old computers in working order if you want a hope in hell of reading old files. This has happened to me. My JS SGC QL cannot read my 60 microdrives of programs unless I remove the SGC which is irretrievably locked into its slot by a badly-placed fixing screw which would damage the card if I tried to remove it. Moreover it has faults on both its native keyboard and Hermes PC keyboard. So I cannot access 30 floppies of code, all written to ED disks. I am left with only recent files accessible from QPC on my PC. So I regularly Defrag, use a Disk cleaner to get rid of most temporary file clutter and delete just about everything on the hard disk after making floppy back-ups. So my PC should at least last a few years longer!

Now back to Duncan's article : The only way to store files safely is to PRINT them so that if necessary you can reload them years later with OCR software. If we were to turn Quanta into an electronic magazine we would probably not be able to read it in five years' time. I enjoy reading old quanta issues from time to time, and indeed have had to retype in programs from them as they are no longer accessible on stored media! So don't rule out printed media until you are sure you can conserve stored files indefinitely. I also like to read magazines in a relaxing armchair. This is impossible when reading text on screen...

Best Wishes,

Steve Poole.

Quanta Magazine
NOTICE CONVENING
ANNUAL GENERAL MEETING 2009

Notice is hereby given that the Twenty-fifth Annual General Meeting of QUANTA will be held at The Allesley Hotel, Allesley, Near Coventry, CV5 9GP on Sunday 19th April 2009 at 2 p.m. for the following purposes:

- 1. To receive the Annual Report of the Committee.**
- 2. To receive the Annual Accounts and Auditor's Report.**
- 3. To receive the Membership Secretary's Report.**
- 4. To elect members of the Committee.**
- 5. To appoint an Auditor and authorise the Committee to fix his/her remuneration.**
- 6. To consider and vote on one Ordinary Resolution as set out below:**

ORDINARY RESOLUTION NO. 1 - POSTAL SUPPLEMENTS

Committee ask the Meeting to note that :-

Due to increases that have taken place in postal charges it has been found necessary to increase the Postage Supplement element of Subscriptions for overseas members who receive their magazines by post from £3.00 p to :-

A) For Members with Addresses in Europe - £5.00 p, making a total of £19.00 p per annum including £14.00 p Full Membership Subscription.

B) For Members with Addresses outside Europe - £8.00 p, making a total of £22.00 p per annum including £14.00 p Full Membership Subscription.

In addition to the subscription, members using Credit / Debit Cards to pay using PayPal have to pay a Card Surcharge of £1.00 p which makes the amounts to be paid – A) £20.00 p for Members with Addresses in Europe, B) £23.00 p for Members with Addresses outside Europe, and C) £15.00 p for Members with UK Addresses or receiving their magazines by E-mail.

To note, also, that these changes came into effect on 1st January 2009.

Finally to note that all other Subscription Rates remain the same as for 2008.

Firstly I would like to thank all Committee Members for their help and support during the past year.

The 2008 AGM at Manchester had an attendance in the upper twenties, and a most pleasant atmosphere at the associated workshop. John Southern and others ran a QL hospital which resuscitated an appreciable number of QLs.

Hopes of an autumn workshop in the south however, disappointingly, did not come to fruition.

Regrettably it was only possible to publish 5 issues of the magazine, and even so some were rather late. John Gilpin had given up the task of preparing it at the end of 2008/09, and when his replacement did not materialise, returned to the task, putting appreciable overload on himself in ensuring that you did not go without your magazine. Thank you very much John.

Notwithstanding these challenges the content has been first class and very varied. A big thank you to – Dan Abbott, Tony Hill, Dilwyn Jones, Duncan Neithercut, Steve Poole, John Roberts, Hugh Rooms, and Bob Spelten Jr.

Yet more increases in postal charges have resulted in a need to increase postal supplements for members living outside UK.

European and All Overseas Members - may I remind you that if you opt to take the electronic version then you will pay only the basic subscription rate of £14.00 per year.

The new QUANTA Web Site is up and working - thanks to Dan Abbott's efforts. He is now adding an "active content management system" which will significantly simplify the task of keeping it up to date.

Sub – Groups - may I remind you that pages are available on the web site for your use including links to connect to your own sites.

Quanta Magazine

The Web Site has also enabled a scheme for paying subscriptions online by PayPal to be devised and implemented. There were some initial teething problems but they have been overcome.

A flourishing new News service has been set up in both the magazine and on the web site by Dilwyn Jones. It is flourishing well – thank you Dilwyn, and Dan.

Dilwyn Jones has also taken on the duty of Librarian, albeit for the time being. There is promise of a Quanta Silver Jubilee Library CD.

Research has been carried out into the practicality of producing a searchable PDF archive on CD or DVD for QUANTA Magazine from the first issue in February 1984 up to to date. The quality of early issues is proving challenging. The most recent are already in PDF format. More in 2009/2010.

Have I achieved, as Chairman, all that I hoped to do? **NO**, but I did not expect to be able to do so.

Has anything been achieved during my time as Chairman? **YES**, with the generous help and support of the Committees you have given me.

With regard to the Committee for 2009/2010 – In accordance with the Constitution I stand down as Chairman at this year's AGM. Sarah Gilpin has been duly proposed and seconded for election as Chairman, likewise Alison Southern for election as Secretary, John Gilpin returns for a final year as Treasurer and Dan Abbott and Dilwyn Jones are both standing for re-election as Committee Members for 2009/2010.

I wish the incoming Committee well as Quanta moves forward into yet another new year.

WHENCE QUANTA AND THE QL?

Committee has reviewed Subscription rates for 2009/2010 and has come to the conclusion that, necessary changes to postal surcharges apart, they should be maintained at the same rates as 2008/2009.

Committee seeks to hold at least two QUANTA workshops a year.

Quanta Magazine

On hardware - During the past year a new format PC – the Mini Notebook – has appeared. There are quite a number of different manufacturers. It is small. It is light and weighs in at about 1 Kg. It is highly portable and will slide easily into a ladies handbag!

However they cost in the region of £200.00 with a Linux OS. Changing that to a Windows OS adds another £60.00. Hopes have been raised of the price coming down to \$100 – but that has yet to happen.

The big attraction to QLers is that QPC will run on a mini – notebook with a Linux OS, using the WINE system.

On software – QLing using emulators continues to appear to be the best way forward. The question arises as to whether there might be merit in porting JAVA to the QL?

A SILVER JUBILEE OVERVIEW

Sinclair launched the QL in January 1984. It came with a SuperBASIC interpreter, the Psion 4 suite, and cost £400. Purchasers had to provide their own monitors (a TV set) and printer. As part of the launch he gave 10,000 QLs to Strathclyde University.

As “The Independent QL Users Group” (IQLUG), QUANTA followed in February 1984 with Leon Heller as Acting Chairman and Brian Pain as Acting Secretary.

Quanta spread like wildfire!

By June the first Software Librarian, Rob Sherratt., had been appointed.

By October demand for Quanta Library programs was so great that 11 Sub-Librarians had had to be recruited.

November saw the first Workshop at Swindon. QUANTA had arrived!

In 1988 Quanta relaunched itself with Alex Tegg - Chairman, Philip Borman – General Secretary, and Alex Waye – Treasurer.

Quanta Magazine

Quanta membership quickly extended worldwide. In 1988 it had over 2,000 members (not so many now).

QUANTA Committee has expanded and contracted to meet the needs of the day. It has had 8 Chairmen, 8 Secretaries, 6 Treasurers, and many Editors, Librarians, and other hard working Committee members.

Today it has 5 members. It would work better if there 6. Will you volunteer?

I believe that the QL and QUANTA have much further to go.

Reverting to the QL – In the early days Freelance Software and Hardware houses were not slow to address expansion needs –

FORTH 68008 Cross Assembler, QL Assembler (Metacomco), PASCAL (Computer One), and a BCPL Compiler were all made available by the end of 1984. Followed by GST QC (C) Compiler in early 1985, and in early 1986 Pro Fortran 77.

The last added “double precision” numbers which enabled Structural Engineers to carry out “Finite Element” design on the QL and demonstrated how advanced the QL was compared to other microcomputers including the BEEB.

Software houses produced many applications such as Turbo, Publisher, and C68 the C language of choice. More recently QPC Print has addressed the modern PC printer problem, and QDT gave the QL a professional desktop system.

Chalmers University of Technology, Göteborg, Sweden produced and distributed a Mathematical Package for the QL. A mammoth work.

The hardware side moved a little slower. Compatible printers were the first priority. October 1985 saw Silicon Express releasing a Disk interface and Internal RAM expansion. Not long after floppy and hard disk drive units appeared.

Down the years many add-ons and add-ins have appeared including Gold, Super Gold and Aurora cards. The last major addition being the Q40 and Q60 computers

**QUANTA INVITE YOU ALL TO JOIN THEM
In COVENTRY
for a 2-day SILVER JUBILEE WORKSHOP and AGM**

Venue: The Allesley Hotel, Allesley, Near Coventry, England CV5 9GP

**Saturday 18th April at 10.00 am. to 4.00 pm.
and
Sunday 19th April 2009 at 10.00 am. to 4.00 pm.**

The AGM will be held at 2.00 pm Sunday April 19th 2009

You are all invited to join us at a **dinner** on Saturday, please book your place by sending a £10.00 non-returnable deposit payable to QUANTA, to **Mrs S Gilpin, 181, Urmston Lane, Stretford, Manchester M32 9EH** by 31st March 2009.

Hotel accommodation has been arranged at The Allesley Hotel at preferential rates and the Hotel requests that you make your booking through Sarah Gilpin - secretary@quanta.org.uk

For directions to the venue:

Please refer to pages 57 to 59 of this issue.

We hope to arrange a programme of presentations and demonstrations for the weekend. If you have any particular topics that you would like to know more about, please let me know as we will have a HELPLINE FORUM on Sunday morning and advance warning of your query would be most helpful to our "experts". For those not attending, this Q & A Forum will be reproduced in the next issue of QUANTA Magazine, so send your queries in anyway.

Sarah Gilpin.
QUANTA Secretary

TO ALL QUANTA MEMBERS

The Proxy Form which you will find on the next page is your chance to vote at the AGM on 19th April even if you can't be present on the day. It is purposely on the middle page so that you can remove it without damaging the rest of the magazine, fill it in and return it to:

**Mrs. Sarah Gilpin,
QUANTA Secretary,
181, Urmston Lane,
Stretford,
Manchester.
M32 9EH**

To be received by her not later than 11th April 2009

Remember, this is YOUR VOTE.

USE IT.

QUANTA ANNUAL GENERAL MEETING 19TH. APRIL 2009 PROXY FORM

I, (Block Caps)

of (address)

.....

 **Postcode**

Hereby appoint :-

The Chairman of the Meeting or, failing him/her(see Note 1 below):

Name:

Of (address)

.....

 **Postcode**

as my proxy to attend and vote in my name and on my behalf at the Annual General Meeting of QUANTA to be held on 19th April 2009 and at any adjournment thereof. Unless instructed to abstain, or vote for or against the resolutions (as set out in the notice convening the meeting) by placing an "X" in the box(es) below, the proxy will vote at his/her discretion.

ORDINARY RESOLUTIONS

FOR AGAINST ABSTAIN

1. To receive the Annual Report of the Committee.	<input type="checkbox"/>	<input type="checkbox"/>	<input type="checkbox"/>
2. To receive the Annual Accounts and Auditor's Report.	<input type="checkbox"/>	<input type="checkbox"/>	<input type="checkbox"/>
3. To receive the Membership Secretary's Report	<input type="checkbox"/>	<input type="checkbox"/>	<input type="checkbox"/>
4. To elect members of the Committee:-			
Chairman - Sarah Gilpin	<input type="checkbox"/>		
Secretary - Alison Southern	<input type="checkbox"/>		
Treasurer - John Gilpin	<input type="checkbox"/>		
Committee Member - Dan Abbott	<input type="checkbox"/>		
Committee Member - Dilwyn Jones	<input type="checkbox"/>		
5. To Appoint an Auditor and authorise the Committee to fix his/her remuneration.	<input type="checkbox"/>	<input type="checkbox"/>	<input type="checkbox"/>

ORDINARY RESOLUTION

FOR AGAINST ABSTAIN

ORDINARY RESOLUTION Number 1

POSTAL SUPPLEMENTS

Committee ask the Meeting to note that :-

Due to increases that have taken place in postal charges it has been found necessary to increase the Postage Supplement element of Subscriptions for overseas members who receive their magazines by post from £3.00 p to :-

A) For Members with Addresses in Europe - £5.00 p, making a total of £19.00 p per annum including £14.00 p Full Membership Subscription.

B) For Members with Addresses outside Europe - £8.00 p, making a total of £22.00 p per annum including £14.00 p Full Membership Subscription.

In addition to the subscription, members using Credit / Debit Cards to pay using PayPal have to pay a Card Surcharge of £1.00 p which makes the amounts to be paid – A) £20.00 p for Members with Addresses in Europe, B) £23.00 p for Members with Addresses outside Europe, and C) £15.00 p for Members with UK Addresses or receiving their magazines by E-mail.

To note, also, that these changes came into effect on 1st January 2009.

Finally to note that all other Subscription Rates remain the same as for 2008.

Dated this 10th February 2009

Signed: Sarah Gilpin - Secretary

NOTES:

1. If you wish to appoint as your proxy a person other than the Chairman of the meeting, delete " The Chairman of the Meeting" and insert (in Capitals) the name and address of your desired proxy, who must be a member of QUANTA at the time of the meeting.

2. This form must reach the Secretary, Mrs. Sarah Gilpin, 181 Urmston Lane, Stretford, Manchester, M32 9EH, United Kingdom, on or before the 11th. April 2009.

Once again there are no exceptional items to report in the QUANTA Accounts for the year ended 31st December 2008. The 'Bottom Line' has this year actually gone positive which is a very pleasing result. As usual, I shall start at the top and compare the year just ended with the previous year.

INCOME

Subscriptions are down but only by an amount which reflects the continuing drop in membership over the last year. The small discrepancy is caused by the previous year's accrual for subscriptions paid mid year (in 2007) by members who have not renewed in 2008.

Sale of Goods to Members has dropped off altogether – see below regarding the disposal of old stock during this year.

Donations include all the income derived from the sale of ex member's second user equipment (less expenses). Our grateful thanks to Rich Mellor who is the driving force behind the sale of such items on our behalf. This effort has resulted in a net income over the year of £647.

Interest and Tax refunds are expectedly reduced since interest rates offered on our savings account have been drastically reduced. Indeed, over the last few months interest has been in pence rather than pounds due to the current financial climate.

EXPENDITURE

The amount recorded as Magazine printing cost is just about what was anticipated since it only covers 3 issues, the other two 3-monthly issues being invoiced at the beginning of 2009 – after the accounting year had ended. The net figure for Magazine postage is again reduced for the same reasons and is anticipated to fall further when the new Postal Supplements have a chance to offset the costs. Members who take their magazine in the electronic format are also helping to contain the postage charges in magazine distribution. It is hoped that this trend will increase in the coming year.

After a serious reconsideration of the value of our stock of items for resale, it was decided that we ought to write off the few items left and report

Quanta Magazine

on the true wealth of QUANTA rather than include an estimated figure which experience has show to be far too high. Any surplus items are being offered to members free of charge if they have any use for them. (A charity collecting tin is available for any small donations offered.)

OVERHEADS

Overheads are significantly down in some categories resulting in a reduction of about £700.00 compared with last year. The slight change in Accountancy fees represents the recent reduction in VAT charged by our Auditor.

This leads to a modest surplus of just over £148 for the year, the first time that a surplus has been recorded for a number of years.

BALANCE SHEET

Just a couple of items here worthy of note.

£250 under Prepayments and Debtors represents a deposit paid to Allesley Hotel for QL is 25 Celebratory Workshop and AGM in April 2009 The loan to Rich Mellor, made in 2007 has been fully repaid in accordance with the agreement with QUANTA as has the cash float to J. Shelton. The figure shown as Current Account & PayPal Account, as implied, represents the sum of the two accounts at year end and a transfer from the PayPal Account has taken place since year end to increase the possibility of added interest becoming payable. (Again a few pence I expect!) Thus, our accumulated Fund is now higher than last year by £148.00 - the net result of the Income and Expenditure Account.

It is foreseen that expenditure in 2009 will increase due to the expenses incurred in celebrating our Silver Jubilee but it is anticipated that expenses for this event will be contained within the budgeted figure of £3,500. With this exception, I can see no reason why QUANTA should not have another near 'break-even' result in 2009.

On behalf of QUANTA and all its members, I would like to thank Elizabeth Armstrong – Auditor – for her “sterling” work and in particular for continuing to support and advise us. We all hope that she will be able to support us in the coming years.

Signed: John Gilpin
QUANTA Hon. Treasurer.

Quanta Magazine

QUANTA Income and Expenditure Account For the Year Ended 31st December 2008.

2007		2008
£	£	£
	INCOME	
2,656	Subscriptions	2,222
42	Sale of Goods to Members	0
15	Credit Card Charges	8
0	Advertising	0
0	Library Receipts	0
0	"QL is 25"	0
<u>1,167</u>	Donations	<u>647</u>
3,880		2,877
	Interest Received	182
307	Less: Taxation (Plus refund)	<u>36</u>
<u>42</u>		146
		<u>3,023</u>
	EXPENDITURE	
1,112	Magazine Printing Costs	482
362	Magazine Postage Costs	258
0	Sundry Purchases	0
0	"QL is 25" Purchases	0
<u>17</u>	Stock Movement (write off)	<u>122</u>
<u>1,491</u>		<u>862</u>
	OVERHEADS	
70	Subgroup Support	83
556	AGM Costs	445
255	Committee Meetings	868
1,356	Workshop Costs	144
233	Committee Members' Expenses	216
0	Royalties Payable	0
110	Insurances	110
0	"QL is 25"	26
125	Accountancy & Audit	115
<u>15</u>	Bank & Credit Card Charges	<u>6</u>
2,720		2,013
	SURPLUS / (DEFICIT) FOR THE YEAR	148
<u>-66</u>		<u>148</u>
	To/(From) QUANTA Accumulated Fund	148
-66		148

John Gilpin (Signed)

Honorary Treasurer.

Quanta Magazine

QUANTA Balance Sheet as at 31st December 2008.

2007		2008
£	£	£
	<u>FIXED ASSETS</u>	
1,075	Equipment at Cost	1,075
<u>-1,067</u>	Less: Depreciation	<u>-1,067</u>
8		8
	<u>CURRENT ASSETS</u>	
122	Stock of Goods for Resale	0
2,150	Prepayments and Debtors	250
	Bank Accounts:	
695	Current Accounts & PayPal Account	3,048
9,695	Deposit Account	9,841
150	Cash in Hand - J Shelton Float	0
<u>0</u>	Cash in Hand - Treasurer	<u>20</u>
12,812		13,159
	<u>CURRENT LIABILITIES</u>	
461	Accrued Charges and Creditors	660
<u>461</u>		<u>660</u>
<u>12,351</u>	NET CURRENT ASSETS	<u>12,499</u>
<u>12,359</u>	<u>TOTAL ASSETS</u>	<u>12,507</u>
	<u>FINANCED BY ACCUMULATED FUNDS</u>	
12,425	Balance brought forward	12,359
<u>-66</u>	Surplus/(Deficit) of Income for the Year	<u>148</u>
<u>12,359</u>		<u>12,507</u>

AUDITOR'S REPORT TO THE MEMBERS OF QUANTA:

I have examined the Income and Expenditure Account and Balance Sheet for the year ended 31st. December 2008 and confirm that they are in accordance with the books and vouchers of the association and the explanation and information provided.

Signed: Elizabeth Armstrong

Name & Address: Elizabeth Armstrong

32, Westmorland Road,
Urmston,
Manchester.
M41 9HL

Quanta Magazine

MINUTES OF THE QUANTA ANNUAL GENERAL MEETING 2008

Venue: 3rd. Davyhulme Scout Headquarters Davyhulme, Manchester

Date: 13th APRIL 2008

Meeting opened at 2.00 pm

Members present: John Mason (Chairman), Sarah Gilpin (Secretary), John Gilpin (Treasurer), Dilwyn Jones, George Gwilt, John Butterworth, Alan Horsley, Geoff Wicks, Rich Mellor, Chris Grogan, John Southern, Alison Southern, Alexia Southern, Keith Dunbar, David Buckley, Tony Hill, John Gregory, Derek Stewart, Dan Abbott, Keith Mitchell.

Apologies for absence: None

Minutes of the previous AGM - had been distributed and it was proposed that the meeting should accept the minutes as a true and accurate record.

Proposed by – John Butterworth

Seconded by – Geoff Wicks

Accepted by a show of hands.

Matters Arising – There were no matters arising. Geoff Wicks gave a vote of thanks to the Secretary for a clear and accurate set of minutes.

Receipt of the Chairman's Annual Report – John Mason

John gave a very short précis of the Chairman's annual report as it had been published in full in the Feb/March magazine. He pointed out that the Committee had been impressed by the number of members attending the Solihull workshop. So far as the two special resolutions to be presented to this meeting, he felt that they had been fully explained in his report. He added that Special Resolution One had been raised in response to a request from the members at the AGM 2007.

[Comment from the floor by Geoff Wicks was in appreciation of the Solihull workshop after the initial difficulties in finding a suitable venue].

It was proposed that the Chairman's Report should be accepted.

Proposed by – John Southern

Seconded by – Tony Hill

Accepted by a show of hands.

Quanta Magazine

Treasurer's Report - John Gilpin

The Treasurer's report was as printed in the Feb/March magazine and John Gilpin explained that we had had to change auditor, as Catherine Banks had moved. The new auditor is Mrs E. R. Armstrong, who, as she is registered for VAT, has increased our invoice by that amount. John then asked if there were any questions regarding the accounts from the floor.

A comment was raised from the floor regarding the change of printer for the magazine and queried why there had been no article regarding this change in the magazine.

John Gilpin explained that the change had been made to improve both the quality of the magazine and the reliability in turn round at the printers. He also stated that QUANTA had received a full refund of the original deposit given to Shelton's Printers of £150.00 after the year end.

He also pointed out that Rich Mellor had now repaid his loan in full. John gave a heartfelt 'thank you' on behalf of the QUANTA Committee for his efforts in selling second hand goods to the benefit of QUANTA.

It was proposed that the meeting accept the Annual Accounts

Proposed by – Alan Horsley

Seconded by – Rich Mellor

Carried by a show of hands.

Appointment of Auditor for 2008/9

It was proposed that QUANTA should appoint Mrs E. R. Armstrong as auditor for 2008/9.

Proposed by – Alan Horsley

Seconded by – Rich Mellor

Carried by a show of hands.

Membership Secretary's Report – John Gilpin

The current membership numbers are as printed in the Feb/March magazine. To date 8 members have cancelled their subscription and 3 new members have joined. 11 members have not yet renewed their subscriptions for 2008; this is the total for both UK and abroad. It is with sadness that John announced that Harry Dennison of Nemqlug had died earlier in April and that a long serving member had died from amongst the Hull members.

[Comment from the floor was that USA renewals are unlikely, both from lack of numbers and lack of a co-ordinator]

Quanta Magazine



**Kaiser-Wilh.-Str. 302
47169 Duisburg
Germany**

Fax +49 203-502012
Web: SMSQ,J-M-S.com
Email: SMSQ@J-M-S.com

NEW! All J-M-S products also available from Quo Vadis Design, Bruce Nicholls: www.QL-QVD.com

QPC2 Version 3 + SMSQ/E Software QL-Emulator for PC's	EUR 59,90
QPC2 Version 3 - Upgrade from QPC2 Version 2	EUR 19,90
QPC2 Version 3 - Upgrade from QPC2 Version 1	EUR 39,90
SMSQ/E ATARI (or SuperGoldCard or QXL)	EUR 39,90
QPC Print (printer emulation driver) for QPC	EUR 39,90
Agenda Agenda program for WMAN and Proview	Y1.09 EUR 14,90
SurgeCSS Database front-end for WMAN	Y2.05 EUR 19,90
QD2003 Painter-Environment-Editor	Y8.01 EUR 39,90
QD2003 Upgrade from QD98	Y8.01 EUR 9,90
QD2003 Upgrade from previous versions	Y8.01 EUR 19,90
QMAKE Pointer-driven MAKE for GST/Quanta Assembler	Y4.31 EUR 14,90
BASIC Linker	Y1.21 EUR 14,90
WINED Floppy/Harddisk Sector- & File-Editor	Y1.26 EUR 14,90
FIFI II File Finder - Extremely useful!	Y4.31 EUR 14,90
FIFI II Upgrade from Fifi V1, 2 or 3	Y4.31 EUR 9,90
EPROM Manager	Y3.02 EUR 14,90
QSpread2003 Spreadsheet Program	Y4.04 EUR 39,90
QSpread2003 Upgrade from QSpread2001	Y4.04 EUR 9,90
QSpread2003 Upgrade from V1	Y4.04 EUR 29,90
QPAC I Utility programs	Y1.11 EUR 19,90
QPAC II Files, Jobs, & other Things	Y1.45 EUR 29,90
QTPY II Spell checker	Y2.17 EUR 24,90
QPTR Pointer toolset	Y3.30 EUR 39,90
DISA Interactive Disassembler	Y3.04 EUR 29,90
typeset-ESC/P2 text87 driver for all ESC/P2 printers (incl. Stylus)	EUR 24,90
CueShell	Y2.14 EUR 29,90
CueShell for QPC	Y2.14 EUR 20,00
SER Mouse software mouse driver for serial mice	EUR 10,00
EasyPTR Version 4	Y4 EUR 59,90
EasyPTR Version 4 - Upgrade from earlier versions	Y4 EUR 39,90
text87plus4patch - now for QPC, QXL, Q40, Q60, Aurora	EUR 10,90
QDT - QL Desktop program	EUR 59,90
QMENU Version 8 - New! with new, printed Manual	Y8.01 EUR 24,90
QMENU Version 8 - Update from earlier Versions, also with printed manual	EUR 17,90
QMENU Version 8 - New/Update for QL - Today subscribers, with printed manual ONLY	EUR 14,90

Please add EUR 4,- for postage EUROPE, or EUR 6,- for postage REST OF WORLD

We accept VISA, MasterCard & Diners Club online and offline! Amex only by mail or fax, not email
New payment methods for our customers: Money transfer to "local" account in many countries!

- Deutschland: Jochen Merz, Account 493 80 451, Postbank Essen, BLZ 360 100 45
- Österreich: Jochen Merz, Account 85055317, FSK Wien, BLZ 63000
- Switzerland: Jochen Merz, Account 80 590000 4, PostFinance, Clearing No. 09000
- The Netherlands: Jochen Merz, Corrommeer, 2268439, Postbank NL, Amsterdam
- and (from all other countries) in EUR with IBAN and BIC to account:
Jochen Merz, Deutsche Postbank AG, IBAN: DE21 3601 0443 0811 0004 37 7010, BIC: FBANK333 330
- UK customers can pay in £ (convert EUR prices above to £ by multiplying with 0.93) to:
Jochen Merz, Account 83/56595, Citibank UK, Sort Code 30-90-45
- send cheques in £ payable to UK sterling cheque!
- US customers can pay in US\$ (convert EUR prices above to US\$ by multiplying with 1.42) - no fax for US cheques in US\$!

Cheques payable to Jochen Merz only!
Please fax with a receipt until April 2009!

Quanta Magazine

MEMBERSHIP REPORT 2008

John Gilpin

As at 31st December 2008, (this date chosen at the request of members present at the AGM 2007 in order to give a consistent annual figure) the QUANTA Membership was made up as follows: (2007 figures are given in brackets for comparison). Figures given as nE denote the number of members taking the Electronic version of the Magazine. All other members take the printed copy which is posted to their home address.

	UK		OS	
Full Members	146	15E (155)	21	7E (24)
Associate Members	2	(2)	Nil	(Nil)
Honorary Members	4	(4)	1	(1)
Other Members	6	(5)	Nil	(Nil)
TOTALS	158	15E (166)	22	7E (25)
Combined Total		180	22E	(191)

John Gilpin
Honorary Membership Secretary.



WEB SITE REPORT

Dan Abbott

The Web site has recently been updated and we are continuing to evaluate various Content Management Systems in order to give more people the facility to update certain areas of the site. This should ensure that the site is kept refreshed and that new material is frequently added.

We now have a QL News page with content from Dilwyn Jones and the facility for people to subscribe to QUANTA using our new PayPal account and their Credit/Debit Cards. Early teething problems on the latter seem to have been overcome (or our Web visitors are becoming more knowledgeable regarding the browsers that they are using).

A listings download page has been introduced so that QLers can download program listings which have recently been published in QUANTA Magazine, and it is hoped to introduce a "Helpline" facility in the near future.

A secure Members-only area is being considered so that facilities like the software library can be made available to those members who register their email address and are issued with a pass word.

Anyone with any ideas for the web site should contact Dan,

webmaster@quanta.org.uk

QUANTA



Independent QL Users Group

World-wide Membership is by subscription only,

Offering the following benefits:

Bimonthly Magazine - up to 52 pages

Massive Software Library - All Free!

Free Helpline and Workshops

Regional Sub-Groups. One near you?

Advice on Software and Hardware problems

Subscription just £14 for Full Membership

PayPal (see QUANTA Web Site),

Cash, Cheques and Postal Orders Accepted

Now in our Twenty Sixth Year

Further details from the Membership Secretary

**John Gilpin, 181, Urmston Lane,
Stretford, Manchester, M32 9EH (UK).**

Tel. +44 (0) 161 865 2872

Email: membership@quanta.org.uk

Visit the QUANTA Web Site

<http://www.quanta.org.uk>

NEXT QUANTA SPONSORED EVENT

The QUANTA SILVER JUBILEE & "QL is 25" 2-day Workshop

And the 25th QUANTA Annual General Meeting

Will be held at:

The Allesley Hotel, Coventry, England. CV5 9GP

On Saturday April 18th and Sunday April 19th 2009

The AGM will be held at 2.00 pm. On Sunday

All enquiries to Sarah Gilpin

Secretary@quanta.org.uk

Roger Godley - Modified Psion Programs

After a long wait, Roger Godley's modified Abacus, Archive, Easel and Quill are finally in the QUANTA library. While disk PS 09 already contained some of Roger's earlier work, these are best viewed as experimental and do contain some problem areas documented by John Gregory at the time. The newer versions have been added to the new disks PS 10 (full version) and PS 11 (cut-down simplified package). These should still be regarded as experimental to some extent (e.g. some versions of Quill may sometimes run into problems when you scroll past the 49/50th line).

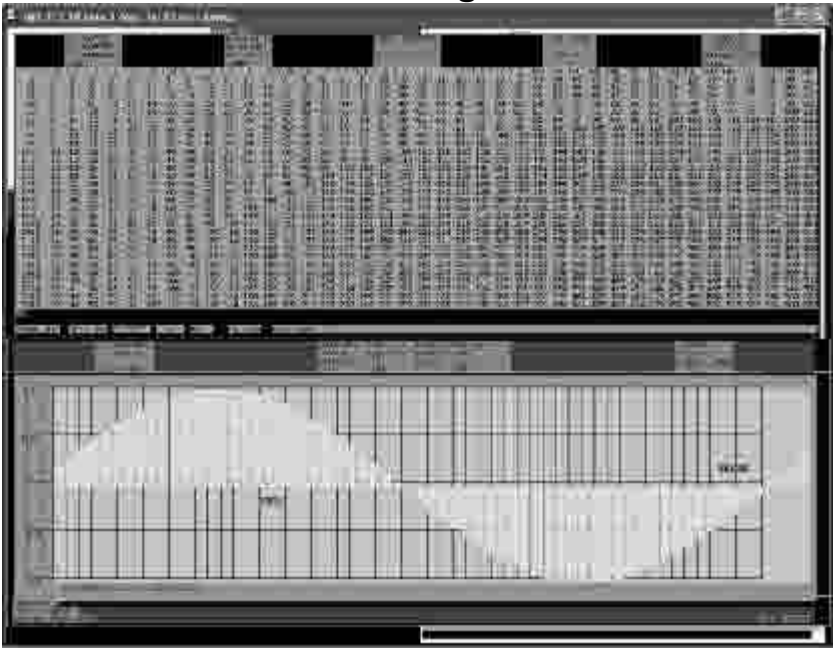
This package is based on version 2g55 from Roger. The modified programs are designed to work in mode 32 on a QPC2 system with a screen resolution of 1024x768. The boot program sets the COLOUR_24 palette, sets up a myriad of windows, loads some extensions, executes many DO files (command files executed by Toolkit 2's DO command), and sets up several hotkeys to control the programs. Instructions are scant, just read the supplied text files, but then these programs are largely experimental and designed for the curious tinkerer! The package is supplied as a QXL.WIN file called 2g55.win which should be set up as WIN5_ in QPC2 and DOS5_ should also point to the same directory from where some demo high colour screens are loaded. The package is only available on a single DOS formatted HD disk (too large for two DD disks, for example). It can be supplied on a QDOS formatted HD disk, but you would need to transfer the files to a DOS/Windows directory.

I suspect that less experienced or less confident users may struggle a little with the version on PS 10, so what I have done is minimised the package and created a simpler form on disk PS 11. This just contains a boot program which sets up hotkeys to control the programs, a short instructions file and a text file viewer, and the modified Psion programs themselves. This package fits onto a single QDOS HD disk.

Please note: the text files on PS 10 and PS 11 refer to programs on the earlier disk PS 09 which I have left in the library for this reason.

I would welcome feedback on these packages, as they have been a long time in preparation and it would be helpful to be able to document any shortcomings in these versions.

Quanta Magazine



Screen Dump Showing Modified Abacus (top) and Easel (bottom)



Screen Dump Showing Modified Archive (right) and Quill (centre)

Quanta Magazine

MaxiProp Upgrade, Disk PF 09

Philip Warne has submitted an update to his MAXIPROP program on disk PF 06, which he has called COLUMNPRINT. Like the earlier versions on PF 06, this program prints using proportionally justified fonts on an ESC/P2 control code set printer (Epson printers with the ESC/P2 control code sets, such as the Stylus 200 and Stylus 850). It can print from Quill DOC and LIS files in columns, as the name implies, although DOC files are normally the preferred option.

COLUMNPRINT (MAXIPROP 3.0)

Functional Features of QUILL files

COLUMNPRINT, the latest version of MAXIPROP, is the largest of four programmes produced to date. Quill files, both ".doc" and ".lis", in the proportional fonts on these Epson printers with at least one proportionally scalable font and ESC/P2 control codes. These codes accompany version 3.0.

MAXIPROP is the simplest, and fastest and will produce satisfactory results for the general bill of documents, but all changes of typeface have to be achieved with user defined translate characters. COLUMNPRINT is larger - and therefore slower - but interprets all the options of typeface in QUILL. Headers, footers, hyphenation and other facilities are included. It also allows character scaling up to maximum point size. For printers with more than one font, such as the Stylus 200 and 850, it is limited to using the scalable bitmap font which has been pre-set as the printer's default font.

Formatting will not be the same as on screen. All Quill typeface commands are catered for. As is usual, any other needs can be met by using translate characters with codes from 127 to 191. Those used in the programme are listed in Appendix C and are easily memorized. In this version, as many CHR, SHUFF & Letter combinations as possible are available for user-defined translates. Characters reserved for programme operation are assigned to the codes above 191. These are also listed. Our translate character included is useful when word pairs are better kept close spaced: a "[SHUFF]" can be used instead of a space (e.g. in the name of a ship, such as HMS [Queen Mary]). This will be replaced by a space during the translate procedure after justification has taken place.

One further step is essential with a ".doc" file and is pre-ful with a ".lis" file. A special character should be added to the last word of your document,

the pages produced by the programme. If the action required begins at the start of the document, the page length can be set to zero and the whole document printed to file. Otherwise, only the required page(s) need be printed. If necessary, should be printed to file. In either case, the file end marker must be inserted at the appropriate point.

In preparing the ".lis" file, if there are any changes of typeface, a special printer driver must be used which converts the Quill typeface codes to the characters listed in Appendix B instead of an ESC/P2 codes. Having extra codes embedded in the text before it is processed may affect the calculation of line lengths. Since Quill eliminates any null typeface, need or unused, at the print stage, for these the relevant character in Appendix B (CHR(136)) must be used. The disc contains such a driver for Xchanges, called "quillmgr". For other versions of Quill, it can be

Sample Printed Output From ColumnPrint



Sample Screen From ColumnPrint

Quanta Magazine

Steve Poole Listings

Steve Poole is one of the most prolific writers on the QL scene. We are all familiar with his articles and listings in the Quanta magazine. His articles often include listings such as his recent games, which are fun to type in and use (if you are like me, after a while correcting my typing errors). We hope that we can now place Steve's listings onto the web site for fast and easy download to avoid typing if you prefer not to type in a listing. I hope to add them to the library too, although I am not yet sure if the best option is to start a new Magazine Listings disk, or to place them in the relevant sections, e.g. games. Feedback on this welcome!

CD version 1.90

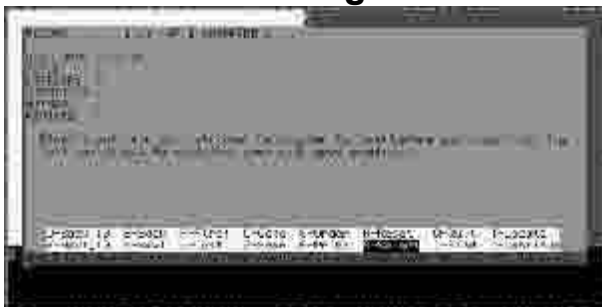
The entire Quanta library is still available on a single CD-R. The latest version is now 1.90, which includes the above updates, plus a few changes to update some text files. I can also supply the Quanta library on a DVD-R if anyone prefers to receive it in this format. A better choice might be a blank, formatted CD-RW, since the re-writable CDs can be re-used. Every time the Librarian updates the Quanta Library CD, you can erase the CD-RW and send it to the Librarian to get it updated, without having to throw the old CD-R away. Please see your Member's Guide (summary below) for details of how to go about ordering the CD and disks from the library.

Please note that although you can run the standard Library Guide from the CD, you may find it easier to use John Gregory's BOOT_DV4 program, which simplifies the use of the directory from which the program works to work with the DEV device, more specifically with DEV4_. Set DEV4_ to wherever your library guide is located e.g. if the CD-ROM drive on your computer is WIN2_ you would set DEV4_ to win2_lg01_libguide_ and it loads a special version of the library guide built to work from DEV4_ so reducing the need to type in long winded path names.

Library Guide Print Selections and Print Problems

Using the Library Guide database, there is no obvious way to print only the content of one particular disk. In practice, you can do this using the Select command. Press S for Select and make sure the cursor is on the DISC NAME row. In here enter the disc title, e.g. GG 01 (note that the disc titles mostly have a space between the two letters and the two numbers). Press ENTER after the disc name and it will now show the first selected record from that disc. In this case, GG 01 has 47 entries.

Quanta Magazine



Entering The Select Parameter

Are you having problems printing to some printers, such as last page not appearing, or next line starting across the page where the previous line ended, like this

Line 1

 Indented Line 2

 Line 3 even further in

Last page not appearing is usually because some modern page printers like lasers or inkjets need a form feed at the end of the last document. If you are using SMSQ/E there is a special version of the PAR device name which adds a linefeed to the end of the document. This is PARF, so when the Library Guide asks for the printer device name as it starts up, enter PARF (if you use parallel port) or SER1f or SER2f (if you print to serial ports).

If this doesn't work on your system (e.g. you use QDOS not SMSQ/E), after printing you can CTRL-C to basic and enter the commands: **OPEN#3,PAR : PRINT #3,CHR\$(12); : CLOSE #3**. Please note that under some circumstances, QPC2 can be a special case in that a print job does not start printing until the program has finished sending output to it and closed the program's output channel, so there may be a delay before printing starts. To the best of my knowledge, Norman Dunbar's Library Guide program closes a channel after each print run, so this may not apply, but it is something to be aware of if you experience printing problems. Windows users who have a QPC2 printing channel open MAY find themselves unable to print from Windows, if so, have a look at the Printers & Faxes menu in Windows Control Panel to see if Windows printing is being held back until QPC2 printing has finished. You may see an entry for "QPC print job" and "spooling" in the printer's menu. This may hold up Windows printing either until you have quit from the Library Guide or quit from QPC2 altogether.

Quanta Magazine

The second problem can also be fixed with an extra letter on the device name to change the end of line characters sent to the printer. By default, QL systems just send a linefeed. Many printers need both a linefeed and a carriage return – the linefeed in this case just moves the print one line down the paper, the carriage return is then needed to move the print head back to the left hand side of the page. To fix this, use PARa or SER1a or SER2a instead of PAR or SER1 or SER2.

How to export the library guide database

Sometimes, we may need to use the database on other systems. This can be done, but since there is no Export command in the Library Guide, we need to study some elementary DBAS programming. First, get a copy of DBAS (which is on library disc SP 07). You need a matching pair of DATA_BIN (the core of DBAS) and DBAS_BIN (the basic extensions). You will need a small program to open the Library Guide database file, export it to a named export file, and finally close the database:

```
100 channel = 3
110 OPEN_DIN #channel;flp1_libguide_dbs
120 EXPORT #channel TO ram1_LIBGUIDE_exp
130 CLOSE_DATA #channel
140 STOP
```

This small program will create an export file copy of the Library Guide from FLP1_ to a file called LIBGUIDE_exp in RAM1_. From here you will have created the export file, which can be imported to various other programs which accept export files. Many PC programs can accept export files directly. If you'd like to create an HTML file from the Library Guide, Wolfgang Uhlig has written a nice little program called DBAS2HTML which is available from Bob Spelten Jr's QL web site at

<http://members.upc.nl/b.spelten/ql/index.html>

It's "written in SBASIC so that you can edit the included CSS-style attributes and the layout of the table in order to meet your personal wishes" (to quote from Bob's web site). You may have guessed from this that I have been trying to look ahead to putting the Library Guide online.

How to order material from the library.

Programs are obtained from the Librarian as detailed below. This is basically an extract from the Member's Guide, with a few additional comments.

Quanta Magazine

You send a formatted disk for each Library disk ordered, in a jiffy bag with a self addressed label, along with proof of your current membership, (e.g. the address label from your latest QUANTA Magazine envelope) with return postage (when weighing the bag at the Post Office put the same stamps **IN** the bag as on the **OUTSIDE** then seal it). You order complete disks not single programs, please send enough disks, extra disks sent & not used will be returned. Orders sent without return postage may **NOT** be returned by the Librarian.

If you do not have disks available they can be supplied by the Librarian. In this case you only need to send £1.00 for each 5 1/4" or 3 1/2 " disk. (These orders are POST FREE.)

Please note this hopefully temporary restriction: My main system only has HD drives. Although I can copy the library disks to DD disks on these drives, they are likely to be less reliable when used on a QL with only DD disk drives. If the disks are to be used on a QL which has ONLY DD disk drives, please state this when ordering, I will set up my backup QL with a DD drive to copy/test the disks before returning them.

Members are advised to contact the Librarian, by phone if possible, before ordering to ensure that he is available (not on holiday!) and that he can copy to the media required & has the disks you want copied. Please do not make long, complex enquiries of the Librarian by letter. A query that takes seconds on the phone can take far longer by letter and at best may be put aside until time can be found to answer. If you don't put a stamp in for a reply, do not expect one. Please phone the Librarian during reasonable hours that is **NOT** after 22.00 hrs.

Please consult the Librarian for disk formats prior to requesting programs. If you live outside the United Kingdom please contact the Librarian, preferably by e-mail, before ordering discs.

All Library programs are distributed on an 'AS IS' basis without warranty in any shape or form whatsoever.

The whole library is now available on a single CD-ROM which can be read by QCDEZE on an Aurora-Qubide QL or Q40/Q60. The programs are in a QXL.WIN which can be read on QPC2, QXL, QemuLator and uQLx. Please e-mail for prices. Those requesting large numbers of discs will be persuaded to order the CD instead!

Correction:

In QUANTA Magazine Volume 26, Issue 4, Page 29, the listing seems to have suffered due to the conversion processes used in editing the publication and the following correction is required to make the program run properly:

Line 150 of Conversions needs " \ " [or some other separator] to be added between each of the print items to read:

```
150 PRINT LEFT$(q$,char)\MID$(q$,char,length)\RIGHT$(q$,char)
```

The separators will be present in the listing which will soon be available on the web site - I have just sent [4 Feb 09] zip-files of Steve Poole's recently published programs to the web master. Steve has generously given permission for his programs to be freely available for download on the web site.

[Sorry to introduce this error into your program Steve. I confirm that the version received from you was correct and hence the conversion process must be responsible for the error. Let's see if I can get the following submission from you correct. - Ed]



ARRAYS AS PARAMETERS

Steve Poole

In Quanta of Feb-March 2008, I described the problem of side effects when using parameters in routines. Now I will mention another thorny subject : Arrays...known in mathematics as matrices.

But first I must mention SuperBASIC strings, which are after all but a convenient way of using one-dimensional arrays! But alas, SuperBASIC's way of configuring strings is not compatible with string-array handling, so if you follow the beginners guide and master strings, you will almost certainly get confused when you start using string arrays.

Quanta Magazine

If you have TURBO, I can strongly recommend that you begin by studying the technical description of how Turbo, (and SuperBASIC), handle strings. In a nutshell, Turbo forces you to DIMension all strings, and then index and manipulate them in a standard, logical way, making string handling MUCH faster and far less error-prone.

Briefly, SuperBASIC strings are flexible, as you never have to bother with setting their length : They expand as you use them, their length being stored automatically in the first two bytes of their internal descriptors. String arrays, however, must always be DIMensioned, except that the last element need not be, (to keep them compatible to normal strings). Confusing?...Yes indeed! So I will not delve too deeply into such subtleties as sub-array range handling, but instead just give you a few tips.

Now, we must mention ranges all the same, as you have to make assignments to arrays before you can use them. Look at the ASSIGN routine. It assigns one letter at a time from the alphabet to each element of the array (in a jumbled order here). This is by far the easiest way of assigning to arrays, (and the method just happens to be identical to that of addressing integer or floating-point arrays). Of course I could have used a simple string, but the whole point of using arrays is to allow an almost infinite number of ways of accessing them.

One element to be very wary of in the array index list is the so-called "Zero'th" element. The simple advice for new programmers is this : Don't use them at all, as it may lead to spurious tampering with string-lengths or fatal interpreter crashes! The limitation that you cannot therefore access the zero element is not important, as you cannot access negative ones either...Just add an offset to and from all indices to make them all positive if the need be.

One of SuperBASIC's greatest weaknesses compared to other languages is that it is impossible to make 'mass-assignments' from one array to another. This problem can be alleviated to some extent by using substring-arrays and ranges, (that is, only if you are already familiar with array-handling). This is why as often as possible I only use FOR-loops to assign methodically, and it should be said, quickly, on fast PC's with emulators. Note how loop names used as indices simplify array access, (on line 230).

Quanta Magazine

Always try to ensure that you read from arrays in the same order as you write to them. But in some programs you may have to change the range-orders (in FOR-loops) if you access an array for different uses. (For example : If you print results using AT, an array written to via x, then y, will have to be read using y, then x, as AT inverses the grid order).

But SuperBASIC can make 'mass-assignments' IF and only IF you pass arrays to routines as parameters. So on Line 160, the call 'ASSIGN' appears to make an exact copy of GLOBAL_ARRAY\$ under the name of FORMAL_ARRAY\$. How it does this is simple : The interpreter simply swaps the names and descriptors temporarily, without swapping the data at all!

Once you are inside a routine, you still have to access the FORMAL_ARRAY\$ by using FOR-loops or sub-string ranges. (But don't forget it is easier to use FOR-loops with their own index ranges than to try to use sub-arrays with their particular default protocols for ranges). And if you use FOR-loops, you won't get bugs when the interpreter rounds up lengths if they are odd. Also remember side effects : Any changes you make to FORMAL_ARRAY\$ will automatically alter GLOBAL_ARRAY\$ on return, (this is the same problem as with all formal parameters....). This means that 'mass-assignment' to formal parameters is possible, but because of the risk of 'side-effects', I prefer not to use them at all.

You can even give LOCAL arrays within routines the same names as simple variables or suchlike outside of that routine. But I don't recommend this to novices. For indeed it can take a lot of concentration initially to do the mental acrobatics necessary to decide how to access arrays. Things are complicated enough as it is!

Dilwyn Jones has written an interesting article on arrays in QL Today, which saves me having to go into the subject in any more detail. I hope this present article will forewarn you of the traps that can be caused by very nasty side effects in complicated programs. But please do experiment with arrays as they are after all a very efficient way of storing data. But as always, DO keep things simple... and once you are sufficiently competent in using arrays, start using sub-arrays, range-slicing and other code short-cuts.

Quanta Magazine

Once you have experimented writing code using arrays, you will find that using integer or floating point arrays is quite straightforward, which cannot be said for string arrays which require particularly careful handling, especially when you use range defaults! Always make written notes of how multi-dimensional arrays are set up, as this is the only way to make sense of code, and keep them for future reference or else expect hours of wasted time while you make head nor tail of them if they are at all complicated!

But with PC memory being cheap nowadays, do not be afraid to make several copies of an array to work on in a clear and standard way. Even better, simply back up your arrays to disk. Now if you feel confident handling arrays, try writing a simple spread-sheet program, data-base or word- processor!

```
100 ::
110 REMark Array_bas. by S.Poole. v2apr2008
120 :
130 CLEAR: OPEN#1,con_32: WINDOW 256,206,256,0
140 PAPER 2: INK 7: CLS: dim1=2: dim2=3: dim3=4
150 DIM Global_Array$(dim1,dim2,dim3)
160 char=65: ASSIGN Global_Array$
170 :
180 DEFine PROCEDURE ASSIGN(formal_array$)
190   FOR index1=1 TO dim1
200     FOR index2=1 TO dim2
210       FOR index3=1 TO dim3
220         char$=CHR$(char): char=char+1
230         formal_array$(index1,index2,index3)=char$
240         PRINT char$;
250       END FOR index3
260     END FOR index2
270   END FOR index1
280 END DEFine
290 ::
```

End of Listing.

Quanta Magazine

SUBGROUP MEETINGS

THE WEST MIDLANDS QL USER GROUP

This long-running group has moved back to its previous venue, the Queens Head pub in the City Centre. Meetings remain open to QUANTA members and non-members alike. The Queens Head is in Steelhouse Lane, Central Birmingham, four minutes walk from Snow Hill main-line railway station and has ample street parking nearby.

Meetings are usually on the first and third Monday of each month (but not on Bank holidays unless the previous one was cancelled for that reason). After your first meeting you're expected to pay £1 each time towards the organisation and monthly newsletter costs - except once a year when the group pays all those who attend a pound instead (We provide food twice a year for those who attend the AGM and the group's birthday party) and at meetings we discuss all sorts of things, QL-related and otherwise, usually from about 8:20 pm. onwards till 10:30 or later. The group owns QL hardware, a disk library and subscribes to relevant magazines. People can join the mailing list for £3.50 per year, even if they can't attend regularly.

The contact number is Mike Bedford White's, on 0121 605 4438, anytime after 11 am.

Email: mikebwhite@blueyonder.co.uk

QUANTA DORSET SUBGROUP

Meetings are held, on the second Sunday of each month at the Merley Community Centre in Harrier Drive, Merley, just south of Wimborne Minster. Time: 2.00 pm. to 5.00 pm. All are welcome.

John Meadows Tel: 01202 576189, or John Mason, 01425 275894.

Quanta Magazine

LONDON QL AND QUANTA GROUP

Meetings are held in the School Room, which is the basement of the Borough Welsh Congregational Chapel, 90, Southwark Bridge Road, London SE1. This is almost opposite the junction with Marshalsea Road, at the other end of which, 5 minutes walk away, is the Borough Underground Station. Free parking is easily available in Southwark Bridge Road for road users, Cyclists are welcome.

Members currently each pay a subscription of £30 per year towards the cost of the hire of the hall and a small additional charge is made for tea/coffee - biscuits are then provided free.

Please bring your QL equipment if possible, all types welcome, e.g., PC portable running emulators. The Group has some systems stored at the venue for its use. In addition, there are lots of donated second user equipment, books, magazines, etc, available for purchase.

Time: 2.00 pm. to 6.00 pm., on the second Sunday of the month.

No meetings are held in either December - winter break, or August summer break. Giving 10 meetings a year.

Malcolm Cadman: Tel: 020 8691 5780

email: QL@mcad.demon.co.uk

NEMQLUG - THE NORTH EAST MANCHESTER QL USER GROUP

Meetings are held at 181, Urmston Lane, Stretford, Manchester. M32 9EH (Near Junction 7 of M60 Motorway - Was Junction 7 M63 Motorway). Our informal meetings start at 7 p.m. and finish at 11 pm. All welcome.

Meets on the last Thursday of each month (except December).

John/Sarah Gilpin 0161-865 2872 (thegilpins@btopenworld.com)

Quanta Magazine

SCOTTISH QL USERS GROUP

SQLUG meets at George Gwilt's home every second Sunday in the month. Please contact George Gwilt before coming to get the location.

Gdgqler@gmail.com

SOLENT SUBGROUP

Meets at Botley Market Hall, all welcome. Park at the back and use side entrance.

1st Saturday of the month from 2.00 pm to 6.00 pm.

Graham Evans, Tel: 023 8040 3350.

SURREY QUANTA SUBGROUP (SQSG)

The group is currently trying other venues in the Leatherhead - Epsom area. If you plan to attend but do not get our emails, please phone or email Ken Bain for the latest location.

Meetings are 8.00 to 10.00 pm. On the last Wednesday of each month except December.

Ken Bain - 01932 - 347 432 (to midnight), kenb@bcs.org.uk

SUSSEX QL USER GROUP

Currently without a meeting place, anyone interested should contact Keith Mitchell or Roy Wood.

Roy Wood, 01273 430501 or Keith Mitchell, 01903 742263.

Quanta Magazine

JOIN US AT QUANTA SILVER JUBILEE and “QL IS 25”

QUANTA is holding a two day workshop on Saturday April 18th and Sunday April 19th at the Allesley Hotel, Coventry, CV5 9GP to celebrate

QUANTA SILVER JUBILEE & “QL is 25”

The workshop will be in the Imperial Suite and all talks will be in the Harmon suite, next door.

It is hoped that talks on Saturday will be given by:-

- | | |
|---------------|--------------------------------------|
| George Gwilt | – on his programs |
| Simon Goodwin | – on the Lear PCB Cad design program |
| Steve Poole | – yet to be decided |

The Repair Desk will be run as usual by Nemqlug sub group. Please bring any items you have for repair and the team will be happy to look at them.

Rich Mellor will be there with RWAP Services.

The Celebratory dinner is on Saturday at 7.30 pm
Cost £20.00 per person to include first drink and coffee

On Sunday morning there will be a session of Questions & Answers – please let the Secretary have your questions by Thursday 16th April if you are not able to attend the workshop or by Saturday 10.00 am at the workshop. This will give the panel time to formulate the best answers. All questions and answers will be printed in the April/May magazine

25th Annual General Meeting

will start Sunday at 2.00 pm in the Harmon Suite

An advantageous accommodation rate has been negotiated as follows:

- | | |
|------------------------------------|--------|
| • Single room bed & breakfast | £47.00 |
| • Twin/Double Room bed & breakfast | £53.00 |

Please book through QUANTA Secretary for accommodation and dinner and NOT with the hotel direct. This is at the hotel's request.

A lunch menu will be available in the Imperial Suite with order forms. Anyone wishing to order a lunch should give their order to the QUANTA Secretary before 11.30 am and it will be delivered between 12.30 and 1.30 with a bill.

Map and directions are given overleaf.

Quanta Magazine



ABOVE: Map showing Allesley and local main roads and motorways

BELOW: Map showing location of Allesley Hotel, Birmingham Road



Quanta Magazine

Allesley Coventry Hotel, Directions

If you are driving:

From **M42** North and South bound:

Take Junction 6 onto A45 for Coventry. Follow Directions 1

From **M6** South bound:

Take Junction 4 then A446 (Coventry A45) and then left onto A45 towards Coventry. Follow Directions 1

From **M6** North Bound

Leave at Junction 2. Follow A46 Coventry E&S. After 5 miles follow A45 Birmingham. Follow Directions 2

From **M1/M69** South bound:

Leave at Junction 21 onto M69 towards Coventry, at the end of the motorway follow A46 Coventry E & S. After 5 miles follow A45 Birmingham. Follow Directions 2

From **M25/M40** North bound:

From **M25** at Junction 16 follow M40 North to Junction 15. Follow signs to Coventry A46 and M69. Carry on approx 9 miles to slip road A45 Birmingham. Take left A45 towards Birmingham for approx 5 miles. Follow Direction 2.

From **M1** North bound:

Leave motorway at junction 17 onto M45. Follow M45 to end onto A45. Follow A45 towards Birmingham. Follow Directions 2.

From **Coventry City centre**:

Leave Ring road at Junction 8 signposted A4114 Allesley Village / A45 Birmingham. Follow main road past MacDonalds to island. Take 3rd exit Allesley Village. The hotel is 150 yards on left.

Directions 1:

Follow dual carriageway towards Coventry approx. 6 miles. Turn left onto A4114 Brownhill Green/City Centre, take second exit to next roundabout then first left Allesley Village, the hotel is 150 yards on left.

Directions 2:

Continue along A45 past Sainsburys through long set of traffic lights. Turn off slip road A4114 Brownhill Green/City Centre. Take fourth exit.

At Next roundabout take first exit - Allesley Village.

The hotel is 150 yards on left.

